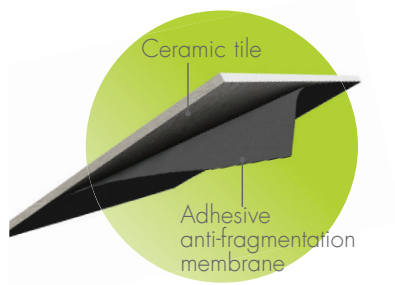


**ADHESIVE ANTI-FRAGMENTATION MEMBRANE**

**PRODUCT DESCRIPTION**

The adhesive anti-fragmentation membrane SUPAF59x59, represents the only patented system that passes the hard body impact test (UNI EN 12825:2003 Standards). The adhesive membrane, applied beneath each tile, prevents chipping and cracking upon the impact of a heavy object.

Available dimensions: 594 x 594 mm - 23-25/64" x 23-25/64".



Fast installation



Quick and easy



Resistant

**TECHNICAL CHARACTERISTICS**

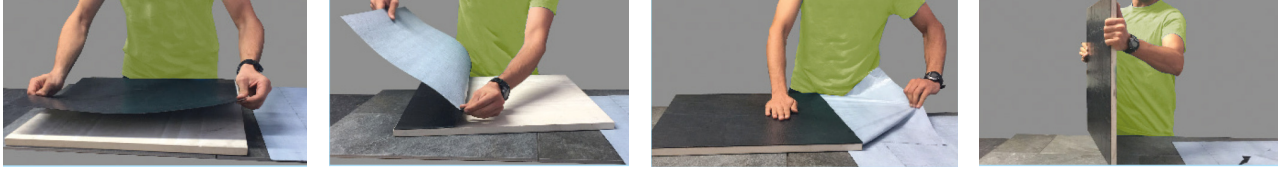
CHARACTERISTICS	UNIT	VALUE	TOLERANCE
Thickness	m	1,2	+/-5%
Mass	kg/m <sup>2</sup>	1,2	+/-10%
Upper face finish	-	HPDE	-
Lower face finish	-	Silicon release film	-
Type of reinforcement	-	Fiberglass - HDPE	-
Adhesive compound description	-	Soft adhesive compound	-
Adhesive compound penetration at 60° C	dm	200	≥
Cold flexibility	°	-30	≤
Watertightness	k	100	≥
Flow resistance	°	100	≤
Tensile strength	N/5 cm	250	≥
Elongation at break	%	250	≥
Tearing resistance	N	200	≥
Dimensional stability	%	0,2	≤
Peel resistance on steel	N/5 cm	50	≥
Peel resistance on steel after ageing at 70°C 12 weeks	N/5 cm	100	≥
Peel resistance 180°C adhesive compound on adhesive compound	N/5 cm	80	≥
Peel resistance 180°C after ageing adhesive compound on adhesive compound	N/5 cm	160	≥
Peel resistance 180°C adhesive compound on HDPE	N/5 cm	50	≥
Peel resistance 180°C after ageing adhesive compound on HDPE	N/5 cm	100	≥
Fire resistance	-	F ROOF	-
Fire reaction	-	F	-

In compliance with D.Lgs. 285/98 the product does not contain dangerous substances.

# ADHESIVE ANTI-FRAGMENTATION MEMBRANE

## PRODUCT INSTALLATION

Installation of adhesive anti-fragmentation membrane is quick and easy. It can be easily applied by a single person within seconds, without any tool in 4 short passages:



**PLEASE NOTE:** the use of a roller speeds up the application and improves the adhesion.

### Recommendations:

- It is recommended to store the product at temperatures above 0°C in suitable environments (covered and ventilated).
- The surface where the product will be applied must be smooth, dry and clean.
- Application must be at ambient temperatures above +10°C/+15°C
- The application must be suspended in case of adverse weather conditions (high humidity, rain, etc.)

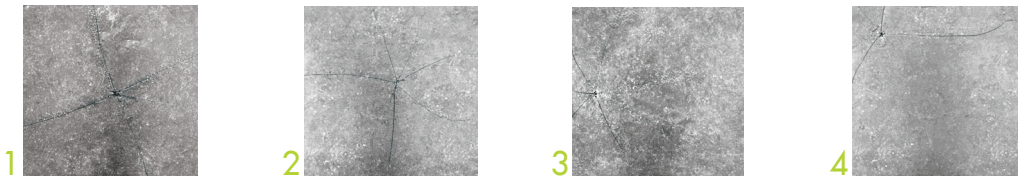
## TEST

This product is the only patented system for ceramic tiles' protection, that can guarantee with its application the overcoming of the dynamic loading test for "hard object impact" with reference to UNI EN 12825:2003 norm.

### Test Passed » No ceramic fragment detached from the panel

Pic. 1,2	✓	DROP TEST IN THE MIDDLE OF THE PANEL
Pic. 3	✓	DROP TEST ON ONE SIDE OF THE PANEL
Pic. 4	✓	DROP TEST AT 7 cm - 3" ON DIAGONAL

This product is the only protective reinforcing system created to be coupled with ceramics, allowing 2 cm - 3/4" thick ceramic tiles for outdoor raised floors to pass the dynamic loading test for hard object impact in all the three tests.



For tiles dimensions	
cm	inches
60 x 60	24 x 24