



2CM PAVERS

August 2019

DISTINCTIVE, SOPHISTICATED, AND LIGHTWEIGHT BISON 2CM PAVERS

Bison 2CM Pavers are a beautiful surfacing option for rooftop environments. These low profile pavers combine a natural quarried stone look with handcrafted precision and performance. The Bison 2CM Paver and Paver Tray* System provides excellent weather resistance and architectural charm to rooftop decks.

- Tested for use with Bison Pedestal Systems. 2CM Pavers are slip, stain, and fade resistant.
- Beautiful Finishes. Durable and easy to clean in high traffic areas.
- Low Height Profile. 0.79" thick (1.24" with Bison Paver Tray).
- Quick and Easy to Install. Recommended for use on Bison Pedestals from 0.50" to 36" in height. Must be used with Bison Paver Tray (Model PT-TRAY-2424-3) when installed on Bison Pedestals.
- Lightweight. 9.45 psf (11.92 psf with Bison Paver Tray). Easy to lift and install.
- Commercial Grade. Great for retrofit applications.
- Made in the U.S.A.

Photographer: Alian Jaramillo

*US Patents Pending.

©2015-2019 United Construction Products, Inc. All Rights Reserved.

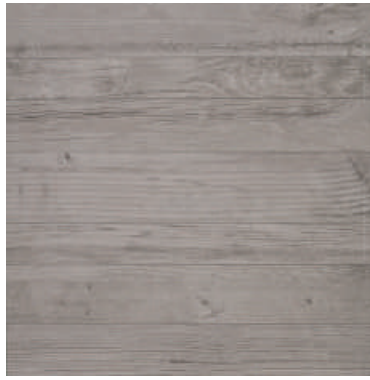
Bison Innovative Products | 701 Osage Street, Unit 120, Denver CO 80204 USA | 800-333-4234 | www.bisonip.com

Bison 2CM Pavers (PT-24-BISON)



AXI Brown Chestnut

Dimensions 23.54" x 23.54" x 0.79"
(598 x 598 x 20 mm)
Weight 36.38 lbs (16.50 kg)
Weight psf 9.45 psf (46.14 kg/m²)
Solar Reflectance Index 30 SRI



AXI Grey Timber

Dimensions 23.54" x 23.54" x 0.79"
(598 x 598 x 20 mm)
Weight 36.38 lbs (16.50 kg)
Weight psf 9.45 psf (46.14 kg/m²)
Solar Reflectance Index 29 SRI



AXI White Pine

Dimensions 23.54" x 23.54" x 0.79"
(598 x 598 x 20 mm)
Weight 36.38 lbs (16.50 kg)
Weight psf 9.45 psf (46.14 kg/m²)
Solar Reflectance Index 63 SRI



Seastone Gray

Dimensions 23.54" x 23.54" x 0.79"
(598 x 598 x 20 mm)
Weight 36.38 lbs (16.50 kg)
Weight psf 9.45 psf (46.14 kg/m²)
Solar Reflectance Index 34 SRI



Block Bianco

Dimensions 23.54" x 23.54" x 0.79"
(598 x 598 x 20 mm)
Weight 36.38 lbs (16.50 kg)
Weight psf 9.45 psf (46.14 kg/m²)
Solar Reflectance Index 65 SRI



Mark Chrome

Dimensions 23.54" x 23.54" x 0.79"
(598 x 598 x 20 mm)
Weight 36.38 lbs (16.50 kg)
Weight psf 9.45 psf (46.14 kg/m²)
Solar Reflectance Index 47 SRI



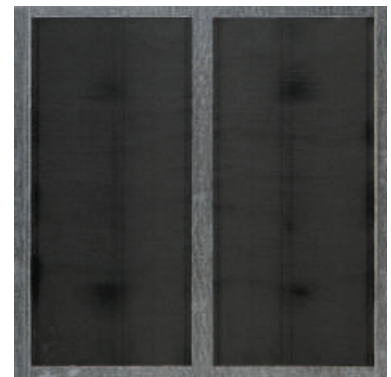
Trust Silver

Dimensions 23.54" x 23.54" x 0.79"
(598 x 598 x 20 mm)
Weight 36.38 lbs (16.50 kg)
Weight psf 9.45 psf (46.14 kg/m²)
Solar Reflectance Index 41 SRI



Trust Gold

Dimensions 23.54" x 23.54" x 0.79"
(598 x 598 x 20 mm)
Weight 36.38 lbs (16.50 kg)
Weight psf 9.45 psf (46.14 kg/m²)
Solar Reflectance Index 50 SRI



PT-TRAY-2424-3

Dimensions 23.43" x 23.43" x 0.45"
(595 x 595 x 12 mm)
Weight 9.52 lbs (4.32 kg)
Weight psf 2.47 psf (12.07 kg/m²)
Fits 595- 602 x 595- 602 mm pavers

NOTE: Bison 2CM Pavers are a natural product and vary in color. Actual colors may differ from pictures; please contact Bison for a color sample. Bison 2CM Pavers MUST be used with the Bison Paver Tray (Model PT-TRAY-2424-3) when installed on Bison Pedestals.

Bison 2CM Paver Testing

Bison 2CM Pavers meet or exceed the following standards:

	Technical Features	Test Method	Requirements for nominal size N		LASTRA 20mm
			N ≥ 15 cm		
			(%)	(mm)	
Structural Characteristics	Water absorption	ASTM C373	Requirement ANSI A 137.1 Water absorption max ≤ 0.5%		≤ 0.1%
Bulk Mechanical Characteristics	Breaking strength	ASTM C648	0 ≥ S ≤ 22000 lbs		≥ 3000 lbs 24" x 24"
Surface Mechanical Characteristics	Mohs hardness/ Scratch resistance	EN 101 ⁽¹⁾	≥ 6 (UGL)		8
Thermal Characteristics	Thermal shock resistance	ISO 10545-9	Pass according to ISO 10545-1	Test method available	Resistant
Chemical Characteristics	Resistance to household chemicals and swimming pool safe	ISO 10545-13	Minimum Class B (U for unglazed tiles)		UA
	Resistance to low concentrations of acids and alkalis		Declared Class	Test method available	ULA
	Resistance to high concentrations of acid and alkalis		Declared Class	Test method available	UHA
	Resistance to staining	ISO 10545-14	Minimum Class 3		5
Safety Characteristics	Dynamic coefficient of friction (DCOF)	ANSI A137.1-2012	ANSI A.137.1 Requires a minimum value of 0.42 for commercial areas that are likely to be wet.		> 0.42 Wet

It is recommended that you order an additional 5-10% of 2CM Paver material to have on hand for breakages and paver replacement as needed. While the thickness and density of Bison 2CM Pavers make for a durable surface material, they can be damaged by mishandling or careless treatment. Please note that if tools, furnishings, or equipment are forcefully dropped on the Pedestal Paver System, chips, scratches, surface damage, and/or cracking and breakage can occur, especially in cold temperatures. Always protect the installed pavers by using sheets of plywood to cover the work area and protect the 2CM Pavers from chipping and breakage. *NOTE: Please refer to Bison Specifications, available at www.bisonip.com for more information.*



Photographer: Alian Jaramillo

Bison 2CM Paver Care & Maintenance Recommendations

NOTE: This guide is intended to be used in conjunction with the most up to date version of Bison Specifications, which can be found online at www.bisonip.com.

Test any cleaners in an inconspicuous area first before applying them to the installed deck. In addition, always check with the manufacturer of your roof membrane to ensure that any cleaning solution or product will not compromise or damage the waterproofing membrane below. Remember to use safety glasses, respirators, and gloves in handling any materials that contain chemicals. Refer to product manufacturer's SDS for more information on chemical components and safe handling practices.

Visual Observation: Check for rocking pavers and adjust or shim immediately. Failure to do so can cause a tripping hazard. Periodically check spacer tabs and immediately replace broken tabs to limit deck movement. Make sure the edge restraint stays intact and structurally sound.

Cleaning: If desired, Bison 2CM Pavers can be periodically cleaned. All spills should be cleaned as quickly as possible. Sweep thoroughly and mop with a clean damp mop using a PH-balanced mild household detergent such as diluted dish soap. Rinse thoroughly with clean, clear water to remove the dirty detergent solution and emulsified soil. Rinsing is a critical step in the maintenance procedure. Remove the rinse water with a squeegee. If dirty detergent solution is not removed and is allowed to dry on the surface, a coating will form which is very difficult to remove.

Deep Cleaning: When necessary, scrub with cotton mop, cloth, sponge, or non-metallic brush. DO NOT use abrasive cleaners, brushes with hard or metal bristles, scouring pads, steel wool, or sandpaper. DO NOT use scouring powders, as these products contain abrasives that may scratch the surface of the paver, or vinegar or any cleaners containing acids or strong alkaline agents. Products with high acid or ammonia content are not recommended. Acid washing is not recommended. Acids, like orange extract and vinegar (including any substance with a PH lower than 7) can damage the glazed surface of the tile and alkaline solutions like ammonia or bleach (including any substance with a PH higher than 7) can discolor. Commercial floor scrubbers or floor buffing machines are not recommended due to their potential to damage the deck system. You may use a pressure washer to remove built-up dirt, mold, or mildew from your 2CM Pavers. A maximum of 1200 PSI is suggested for Bison 2CM Pavers. Test an inconspicuous area first and be careful to clean the entire deck to avoid lap marks.

Sealing: Applying sealer or wax to 2CM Pavers is not recommended.

Water and Snow Removal: Always rinse pavers thoroughly after any application of ice-melt to avoid the buildup of salt crystals. After rinsing squeegee pavers dry.

Bison 2CM Paver Installation Instructions

NOTE: For more information, please reference the most up to date version of Bison Specifications and Details, which can be found online at www.bisonip.com.

Project Conditions: Recommended minimum installation temperature is 50°F (10°C) and rising. 2CM Pavers can become brittle in extremely cold conditions. Use additional caution when handling, working with, or working on top of pavers in temperatures colder than 50°F (10°C). Bison 2CM Pavers, Paver Trays, and Pedestals are for use with pedestrian traffic only.

Installation: Bison 2CM Pavers can be installed over joist systems or Bison Pedestals from 0.50" (12.7 mm) to 36" (914.4 mm) in height. Bison 2CM Pavers MUST be used with the Bison Paver Tray (Model PT-TRAY-2424-3) when installed on Bison Pedestals. Use Bison Pedestal Tabs to ensure adequate spacing. Use of the Bison Fastening Spline (Model FS-12) is strongly recommended.